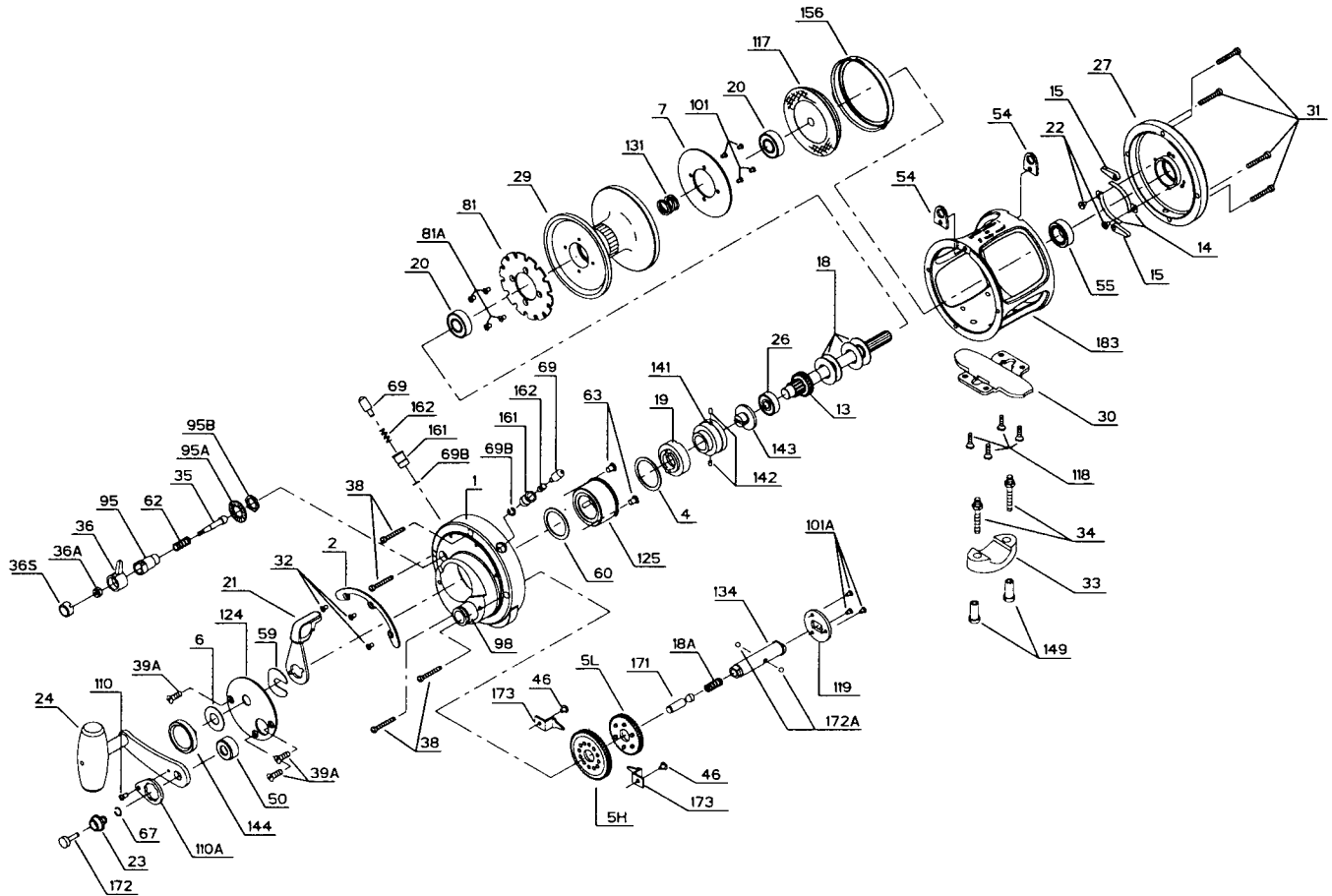




PARTS AND PRICE LIST FOR INTERNATIONAL II 16S



Key No.	Part No.	Description	Price	Key No.	Part No.	Description	Price
1	1-16S	R.S. Plate Assembly	\$75.00	60	60-50	Backing Washer	.80
2	2-16S	Quadrant Ring	4.00	62	18-60	Click Spring	.40
4	4-30	Cam Thrust Washer	.95	63	63-349	Hold Down Screw (2 req.)	.80
5H	5-16HS	Main Gear High Speed	16.00	67	67-16S	Plunger Cap Retaining Ring	.50
5L	5-16LS	Main Gear Low Speed	17.50	69	69-50	Locating Pin (2 req.)	1.05
6	6-155	Spacer Washer	.60	69B	69B-50	Retaining Ring (2 req.)	.80
7	7-16S	Metal Drag Washer	6.60	81	81-16S	Ratchet	3.50
13	13-16S	Pinion Gear	15.75	81A	101-30	Ratchet Screw (4 req.)	.45
14	14-16S	Dog Spring (2 req.)	1.00	95	95-80	Click Tongue Bushing	2.05
15	15-50	Dog (2 req.)	.80	95A	95A-20	Click Bushing Washer	.60
18	18-20	Disc Clutch Spring (4 req.)	.70	95B	38-710	Click Bushing Nut	.50
18A	18-349	Gear Stud Spring	.40	98	98-16S	Bridge Bushing	4.50
19	19-16S	Eccentric Cam	7.05	101	101-30	Drive Plate Screw (4 req.)	.45
20	20-704	Spool Ball Bearing (2 req.)	16.00	101A	101-50S	Coupling Plate Screw (3 req.)	.40
21	21-16S	Eccentric Lever	4.50	110	110-50	Handle Lock Screw	.50
22	22-109	Dog Spring Screw (2 req.)	.50	110A	110A-16S	Handle Locking Plate	2.00
23	23-16S	Handle Screw	3.00	117	117-16S	Drive Plate w/Drag Washer	10.95
24	24-16S	Handle Complete	12.50	118	118-80	Stand Screw (4 req.)	.50
26	26-40	Ball Bearing	13.25	119	119-30S	Coupling Plate	1.10
27	27-16S	L.S. Plate	40.25	124	124-16S	Bridge Cover	4.75
29	29L-16S	Spool	61.00	125	125-30S	Cam Housing	13.55
30	30-12LT	Stand	17.00	131	131-6	L.S. Bearing Spring	.80
31	31-80	R.S. Plate Screw (4 req.)	.45	134	134-16S	Gear Stud	5.50
32	110-50	Quadrant Screw (3 req.)	.50	141	141-16S	Cam Follower	4.65
33	33-113	Rod Clamp	4.00	142	142-50	Cam Follower Pin (2 req.)	.50
34	34-114HLW	Clamp Screw (2 req.)	1.30	143	143-30	Adjusting Screw	2.30
35	35-80T	Click Tongue	1.25	144	144-16S	Preset Knob	4.50
36	36-50	Click Button	5.00	149	149-45	Rod Clamp Nut (2 req.)	.90
36A	36-700	Click Button Nut	.80	156	156-16S	Drag Cover	3.25
36S	36S-80ST	Click Button Cap	.40	161	161-50	Locating Pin Bushing (2 req.)	1.05
38	38-50	R.S. Plate Screw (4 req.)	.50	162	162-50	Locating Pin Spring (2 req.)	.45
39A	39A-80S	Bridge Cover Screw (3 req.)	.45	171	171-16S	Plunger	2.25
46	46A-704	Cam Housing Screw (2 req.)	.45	172	172-16S	Plunger Cap	2.35
50	50-16S	Gear Stud Shield	2.00	172A	172A-16S	Shifting Ball (2 req.)	.50
54	54-16S	Harness Lug (2 req.)	2.00	173	173-50S	Gear Retainer (2 req.)	1.25
55	55-80ST	Ball Bearing	21.00	183	183-16S	Tube Frame	52.00
59	59-50	Slotted Washer	.80				